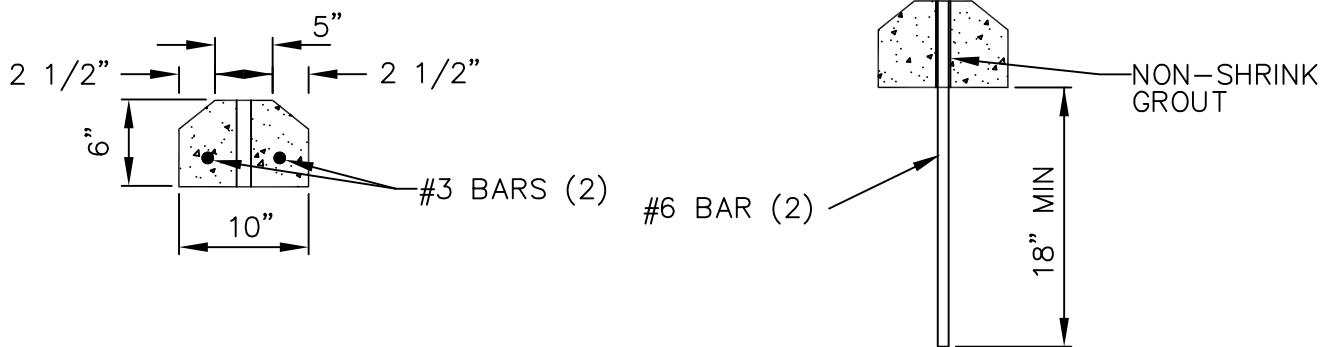


PRECAST PCC CURB BUMPER



ATTACHMENT DETAIL

NOTES:

1. THE NON-SHRINK GROUT USED TO ATTACH THE PRECAST CURB SHALL CONSIST OF 3:1 SAND AND CEMENT. GROUT TO A DEPTH OF 1" FROM THE TOP OF THE BUMPER.
2. LOCATIONS FOR WEEPHOLES, AND V-SLOTS SHALL BE IDENTIFIED ON THE DELIVERY ORDER DRAWINGS.
3. CONCRETE SHALL HAVE A COMPRESSIVE STRENGTH OF 3000 PSI AT 28 DAYS.

STANDARD DETAILS	
DRAWING TITLE. PRECAST PCC CURB BUMPER AND ATTACHMENT DETAIL	
DATE: AUGUST 2018	SCALE: NONE
PLATE NO: R-16	SPEC. SECT. _____ PAGE _____