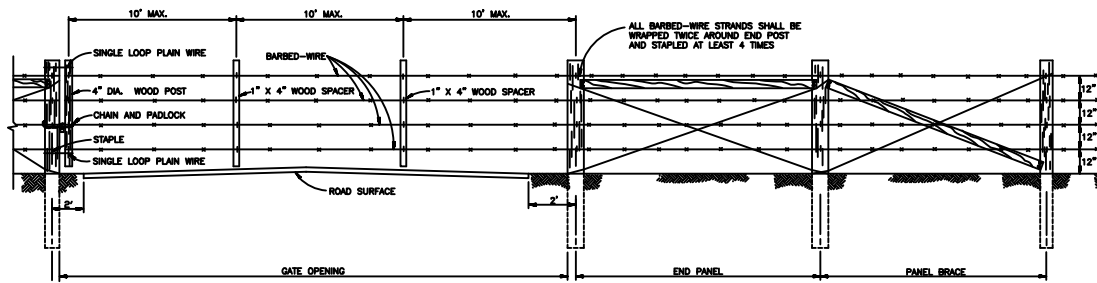
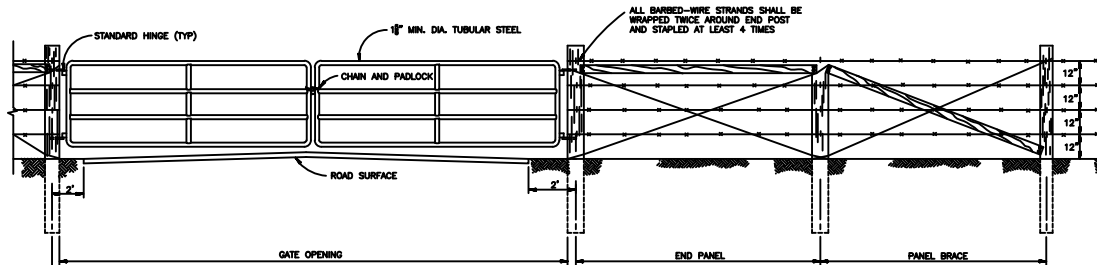


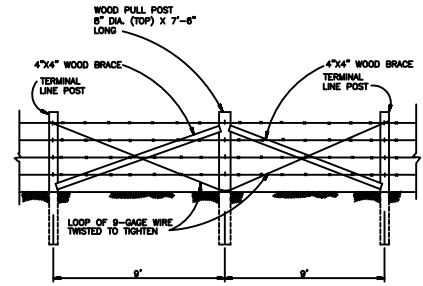
① TYPICAL LAYOUT - 4 STRAND BARBED WIRE FENCE  
NO SCALE



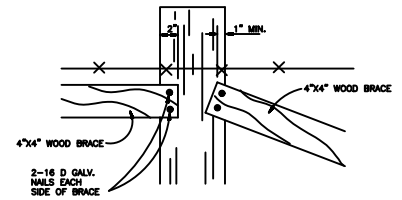
TYPICAL BARBED-WIRE DROP GATE  
DETAIL NO SCALE



TYPICAL PANEL GATE  
DETAIL NO SCALE



NOTE:  
ALL BARBED-WIRE STRANDS SHALL BE WRAPPED TWICE AROUND PULL POST AND STAPLED AT LEAST 4 TIMES.  
PULL BRACE PANEL  
DETAIL NO SCALE



DAP DETAIL  
NO SCALE

- NOTES:
1. THE SPACING OF END OR CORNER PANEL AND BRACE PANEL OF 10' AND 9' IS MAXIMUM. WHEN CORNER OR END PANEL CONFLICTS WITH GATE OR CATTLE GUARD BRACE PANELS, OR TWO CORNER PANELS CONFLICT, BRACING AND SPACING OF POSTS SHALL BE ALTERED TO PROVIDE ADEQUATE BRACING AS REQUIRED.
  2. THE GATE SHOWN IS TYPICAL. ANY STANDARD COMMERCIAL GATE THAT VARIES ONLY IN NON-ESSENTIAL DETAILS SHALL BE ACCEPTABLE, SUBJECT TO APPROVAL.
  3. LATCH AND PIN FOR PANEL GATE IS REQUIRED, BUT NOT SHOWN.

**\$\$ - THINK VALUE ENGINEERING - \$\$**

Revisions			
Symbol	Description	Date	Approved
①	REV #0001 GENERAL REVISIONS	3/17/04	JWE

U.S. ARMY ENGINEER DISTRICT  
CORPS OF ENGINEERS  
OMAHA, NEBRASKA

Designed by:	x	BASE STANDARD DETAILS FOR CHAIRS, SECURITY FENCES, FARM STYLE FENCES AND A DOUBLE CABLE	Sheet Number:	12
Drawn by:	x	BARBER	Scale:	AS SHOWN
Checked by:	x	BARBER	Design File:	2_BW\FENCE2.DWG
Reviewed by:	x		Date:	03/17/04
Submitted by:			Spec. No.:	DAQA 45
Chief:			Drawing Code:	STD 872-90-12