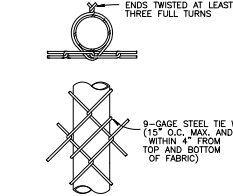
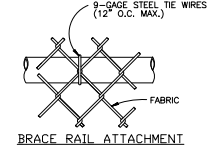
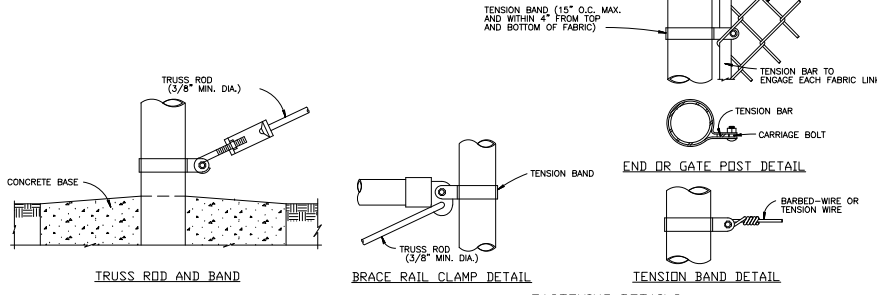


**STEEL POST SCHEDULE**  
MINIMUM OUTSIDE DIMENSIONS (NOMINAL)

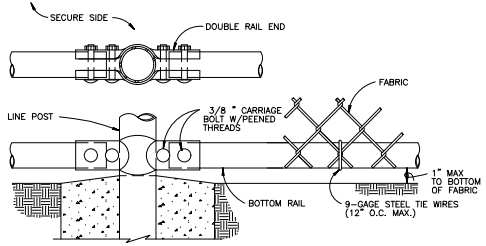
USE AND SECTION	FABRIC WIDTH 72" OR LESS	FABRIC WIDTH 84" TO 108"	FABRIC WIDTH 108" AND OVER
CORNER, END & PULL POSTS			
TUBULAR - ROUND	2.375" O.D.	2.875" O.D.	4.00" O.D.
LINE POSTS			
TUBULAR - ROUND	1.90" O.D.	2.375" O.D.	2.875" O.D.
BOTTOM & BRACE RAILS			
TUBULAR - ROUND	1.66" O.D.		
TUBULAR - SQUARE	1.50" SQ.		
H-SECTION	1.625" x 1.50"		
C-SECTION (ROLL-FORMED)	1.625" x 1.25"		

1 CHAIN-LINK SECURITY FENCE DETAIL  
NO SCALE

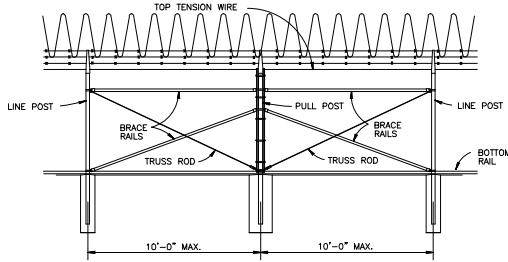


FASTENING DETAILS  
NO SCALE

1 LINE POST ATTACHMENTS

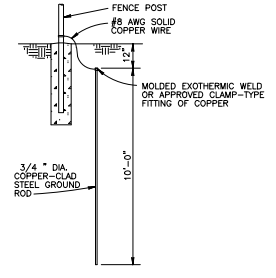


1 BOTTOM RAIL DETAILS  
NO SCALE



1 BRACE PANEL DETAIL  
NO SCALE  
NOTE: PROVIDE BRACE PANEL WHENEVER STRAIGHT RUNS EXCEED 500 FEET.

GROUNDING DETAIL  
NO SCALE



- 1 NOTES:
1. WIRE TIES, RAILS, POSTS, AND BRACES SHALL BE CONSTRUCTED ON THE SECURE SIDE OF THE FENCE ALIGNMENT. CHAIN-LINK FABRIC SHALL BE PLACED ON THE SIDE OPPOSITE THE SECURE AREA.
  2. ONLY 9-GAGE GALVANIZED STEEL TIE WIRES SHALL BE USED FOR FASTENING THE FENCE FABRIC TO FENCE POSTS AND RAILS. 16-GAGE, STAINLESS STEEL TIE WIRES SHALL BE USED FOR FASTENING FENCE FABRIC TO TENSION WIRES. HOG RINGS SHALL NOT BE ALLOWED ON SENSORED FENCES.
  3. BOTTOM RAIL SHALL BE ATTACHED TO DOUBLE RAIL ENDS USING 3/8" CARRIAGE BOLTS AS SHOWN. ADDITIONAL HOLES SHALL BE DRILLED THROUGH THE BOTTOM RAIL ENDS TO INSURE THAT CARRIAGE BOLTS PASS THROUGH THE BOTTOM RAIL AS SHOWN.

FENCE LEGEND:

- TYPE FE5 - CHAIN-LINK FENCE WITHOUT BARBED-WIRE APRON
- TYPE FE6 - CHAIN-LINK FENCE W/BARBED-WIRE ON SINGLE OUTRIGGER
- TYPE FE7 - CHAIN-LINK FENCE W/BARBED WIRE ON DOUBLE OUTRIGGER
- TYPE FE8 - CHAIN-LINK FENCE W/BARBED-WIRE AND BARBED-TAPE ON DOUBLE OUTRIGGER
- TR - FENCE WITH TOP RAIL AND TENSION WIRE AT BOTTOM
- TRR - FENCE WITH TOP AND BOTTOM RAILS
- TWB - TENSION WIRE TOP AND BOTTOM
- TWR - FENCE WITH TOP TENSION WIRE AND BOTTOM RAIL
- FINAL NUMBER IS FABRIC WIDTH IN INCHES.

EXAMPLES:

- FE6-TR-72 - CHAIN-LINK SECURITY FENCE WITH BARBED-WIRE ON SINGLE OUTRIGGER, TOP RAIL, AND 72 INCH FABRIC WIDTH.
- FE8-TWB-84 - CHAIN-LINK SECURITY FENCE WITH NO APRON, TOP AND BOTTOM TENSION WIRE, AND 84 INCH FABRIC WIDTH.

**\$\$ - THINK VALUE ENGINEERING - \$\$**

Symbol	Revisions Descriptions	Date	Approved
2	REV #001 GENERAL REVISIONS	5/17/06	JME
1	REV #001 GENERAL REVISIONS	3/17/04	JME

U.S. ARMY ENGINEER DISTRICT  
CORPS OF ENGINEERS  
DUMAH, NEBRASKA

Designed by:	X	BASE NAME	BASE LOCATION
Drawn by:	X	STANDARD DETAILS: FBR CHAIN-LINK SECURITY FENCES, FARM STYLE FENCES AND A DOUBLE CABLE BARRIER	
Checked by:	X	FE8 CHAIN-LINK SECURITY FENCE DETAILS FOR SENSORED FENCE	
Reviewed by:	X	Plot Scale Ratio: 1:1	Date: 03/17/04
Submitted by:	X	Design File: FEBENADGN	Spec. No. Drawing Code:
Chief: X	Section:	Contract No. STD 872-90-07	Sheet Reference: 07