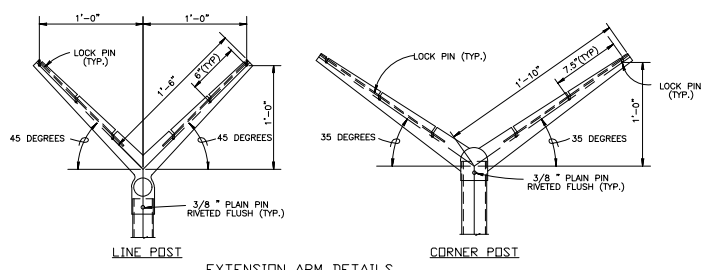
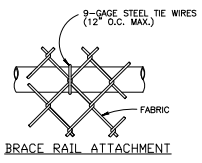


① CHAIN-LINK SECURITY FENCE DETAIL
NO SCALE

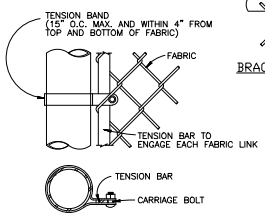


EXTENSION ARM DETAILS
NO SCALE

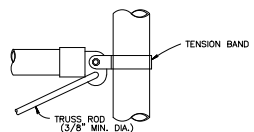
USE AND SECTION	STEEL POST SCHEDULE MINIMUM OUTSIDE DIMENSIONS (NOMINAL)		
	FABRIC WIDTH 72\"/>		
CORNER, END & PULL POSTS			
TUBULAR - ROUND	2.375\"/>		



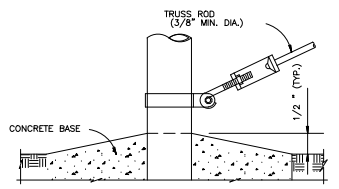
BRACE RAIL ATTACHMENT



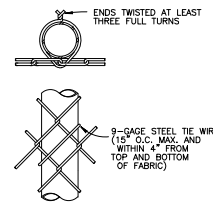
END OR GATE POST DETAIL



BRACE RAIL CLAMP DETAIL



① TRUSS ROD AND BAND



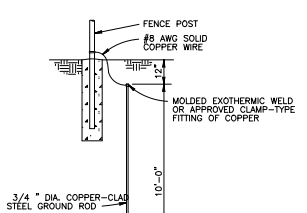
① LINE POST ATTACHMENTS

- ① NOTES:
1. WIRE TIES, RAILS, POSTS, AND BRACES SHALL BE CONSTRUCTED ON THE SECURE SIDE OF THE FENCE ALIGNMENT. CHAIN-LINK FABRIC SHALL BE PLACED ON THE SIDE OPPOSITE THE SECURE AREA.
 2. ONLY 9-GAGE GALVANIZED STEEL TIE WIRES SHALL BE USED FOR FASTENING THE FENCE FABRIC TO TENSION WIRES AND RAILS. 16-GAGE, STAINLESS STEEL TIE WIRES SHALL BE USED FOR FASTENING FENCE FABRIC TO TENSION WIRES. HOG RINGS SHALL NOT BE ALLOWED ON SENSORED FENCES.
 3. BOTTOM RAIL SHALL BE ATTACHED TO DOUBLE RAIL ENDS USING 3/8\"/>

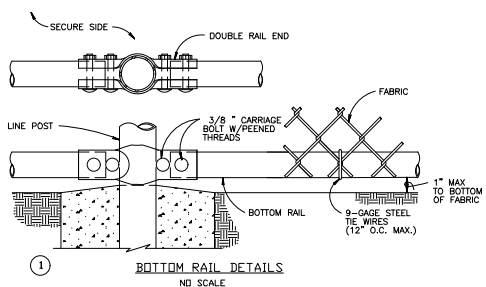
- FENCE LEGEND:
- TYPE FE5 - CHAIN-LINK FENCE WITHOUT BARBED-WIRE APRON
 - TYPE FE6 - CHAIN-LINK FENCE W/BARBED-WIRE ON SINGLE OUTTRIGGER
 - TYPE FE7 - CHAIN-LINK FENCE W/BARBED-WIRE ON DOUBLE OUTTRIGGER
 - TYPE FE8 - CHAIN-LINK FENCE W/BARBED-WIRE AND BARBED-TAPE ON DOUBLE OUTTRIGGER
 - TR - FENCE WITH TOP RAIL AND TENSION WIRE AT BOTTOM
 - TBR - FENCE WITH TOP AND BOTTOM RAILS
 - TWB - TENSION WIRE TOP AND BOTTOM
 - TWR - FENCE WITH TOP TENSION WIRE AND BOTTOM RAIL
- FINAL NUMBER IS FABRIC WIDTH IN INCHES.

- EXAMPLES:
- FE8-TR-72 - CHAIN-LINK SECURITY FENCE WITH BARBED-WIRE ON SINGLE OUTTRIGGER, TOP RAIL, AND 72 INCH FABRIC WIDTH.
 - FE5-TWB-84 - CHAIN-LINK SECURITY FENCE WITH NO APRON, TOP AND BOTTOM TENSION WIRE, AND 84 INCH FABRIC WIDTH.

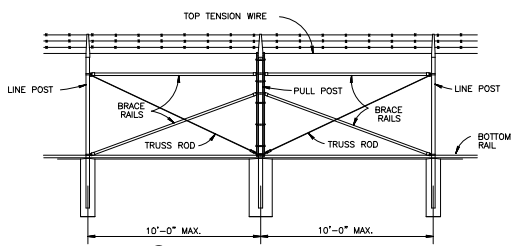
FASTENING DETAILS
NO SCALE



GROUNDING DETAIL
NO SCALE



① BOTTOM RAIL DETAILS
NO SCALE



① BRACE PANEL DETAIL
NO SCALE

NOTE: PROVIDE BRACE PANEL WHENEVER STRAIGHT RUNS EXCEED 500 FEET.

\$\$\$ - THINK VALUE ENGINEERING - \$\$\$

Symbol	Revisions Descriptions	Date	Approved
③	REV #001 GENERAL REVISIONS	5/17/03	JWE
①	REV #001 GENERAL REVISIONS	3/17/04	JWE

U.S. ARMY ENGINEER DISTRICT
CORPS OF ENGINEERS
OMAHA, NEBRASKA

Designed by: x	BASE NAME	BASE LOCATION
Drawn by: x	STANDARD DETAILS FOR CHAIN-LINK SECURITY FENCES, STYLE FENCES AND A DOUBLE CABLE BARRIER	
Checked by: x	FE7 CHAIN-LINK SECURITY FENCE DETAILS FOR SENSORED FENCE	
Reviewed by: x	Plot Scale Ratio: 1:1	Date: 03/17/04
Submitted by: x	Design File: FE7FENR10GN	Sheet Number: 06
Chief: x	Contract No.	Drawing Code: STD 872-90-06