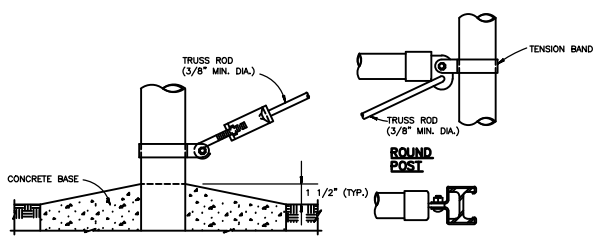


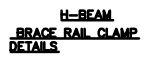
LINE POST EXTENSION ARM DETAILS NO SCALE

USE AND SECTION	MINIMUM OUTSIDE DIMENSIONS (NOMINAL)		
	FABRIC WIDTH 72" OR LESS	FABRIC WIDTH 84" TO 96"	FABRIC WIDTH 108" AND OVER
CORNER, END & PULL POSTS			
TUBULAR - ROUND	2.375" O.D.	2.875" O.D.	4.00" O.D.
TUBULAR - SQUARE	2.00" SQ.	2.50" SQ.	3.00" SQ.
C-SECTION (ROLL-FORMED)	3.50" X 3.50"	3.50" X 3.50"	---
LINE POSTS			
TUBULAR - ROUND	1.90" O.D.	2.375" O.D.	2.875" O.D.
H-SECTION	2.25" X 1.70"	2.25" X 1.70"	2.25" X 1.70"
C-SECTION (ROLL-FORMED)	1.875" X 1.625"	2.25" X 1.70"	---
TOP, BOTTOM & BRACE RAILS			
TUBULAR - ROUND	1.66" O.D.	---	---
TUBULAR - SQUARE	1.50" SQ.	---	---
H-SECTION	1.625" X 1.50"	---	---
C-SECTION (ROLL-FORMED)	1.625" X 1.25"	---	---

1 CHAIN-LINK SECURITY FENCE DETAIL NO SCALE



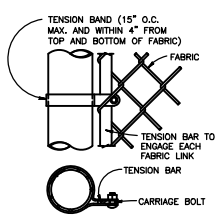
1 TRUSS ROD AND BAND



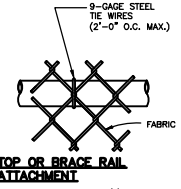
H-BEAM BRACE RAIL CLAMP DETAILS



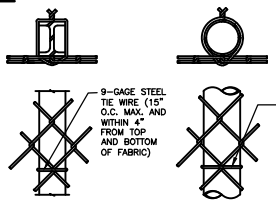
FASTENING DETAILS NO SCALE



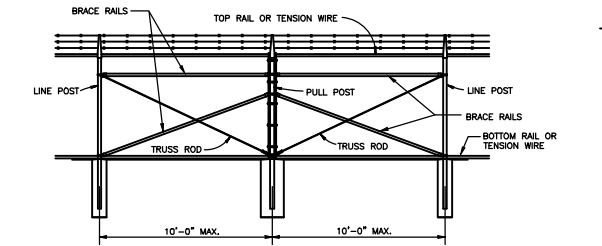
TENSION BAND DETAIL



TOP OR BRACE RAIL ATTACHMENT

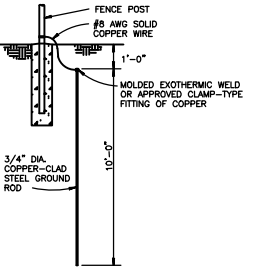


H-BEAM ROUND POST LINE POST ATTACHMENTS

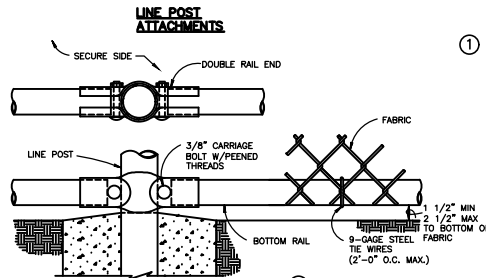


1 BRACE PANEL DETAIL NO SCALE

NOTE: PROVIDE BRACE PANEL WHENEVER STRAIGHT RUNS EXCEED 500 FEET.



GROUNDING DETAIL NO SCALE



BOTTOM RAIL DETAIL NO SCALE

1 NOTES:

- DETAILS SHOWN ARE TO CLARIFY REQUIREMENTS AND ARE NOT INTENDED TO LIMIT OTHER TYPES OF FENCE SECTIONS AND METHODS OF INSTALLATION THAT COMPLY WITH THE SPECIFICATIONS.
- WIRE TIES, RAILS, POSTS, AND BRACES SHALL BE CONSTRUCTED ON THE SECURE SIDE OF THE FENCE ALIGNMENT. CHAIN-LINK FABRIC SHALL BE PLACED ON THE SIDE OPPOSITE THE SECURE AREA.
- C-SECTION POSTS SHALL BE INSTALLED SO THAT THE VOID INSIDE THE POST IS COMPLETELY FILLED WITH CONCRETE UP TO THE TOP OF THE FOUNDATION.
- BOTTOM RAIL SHALL BE ATTACHED TO DOUBLE RAIL ENDS USING 3/8" CARRIAGE BOLTS AS SHOWN.

FENCE LEGEND:

- TYPE FE5 - CHAIN-LINK FENCE WITHOUT BARBED-WIRE APRON
- TYPE FE6 - CHAIN-LINK FENCE W/BARBED-WIRE ON SINGLE OUTRIGGER
- TYPE FE7 - CHAIN-LINK FENCE W/BARBED-WIRE ON DOUBLE OUTRIGGER
- TYPE FE8 - CHAIN-LINK FENCE W/BARBED-WIRE AND BARBED-TAPE ON DOUBLE OUTRIGGER
- TR - FENCE WITH TOP RAIL AND TENSION WIRE AT BOTTOM
- TER - FENCE WITH TOP AND BOTTOM RAILS
- TWB - TENSION WIRE TOP AND BOTTOM
- TWBR - FENCE WITH TOP TENSION WIRE AND BOTTOM RAIL. FINAL NUMBER IS FABRIC WIDTH IN INCHES.

EXAMPLES

- FE6-TR-72 - CHAIN-LINK SECURITY FENCE WITH BARBED-WIRE ON SINGLE OUTRIGGER, TOP RAIL, AND 72 INCH FABRIC WIDTH.
- FE5-TWB-84 - CHAIN-LINK SECURITY FENCE WITH NO APRON, TOP AND BOTTOM TENSION WIRE, AND 84 INCH FABRIC WIDTH.

\$\$\$ - THINK VALUE ENGINEERING - \$\$\$		
Symbol	Revisions Description	Date
(1)	REV #0001 GENERAL REVISIONS	3/17/04 JWE

U.S. ARMY ENGINEER DISTRICT
CORPS OF ENGINEERS
OMAHA, NEBRASKA

Designed by:	BASE NAME	BASE LOCATION
Drawn by:	STANDARD DETAILS FOR CHAIN-LINK SECURITY FENCES, FARM STYLE FENCES AND A DOUBLE CABLE BARRIER	
Checked by:	FE7 CHAIN-LINK SECURITY FENCE DETAILS	
Reviewed by:	FOR NON-SENSORED FENCE	
Submitted by:	Plot Scale Ratio: 1:1	Date: 03/17/04
Chief:	Spec. No.: DACCA 45	Drawing Code: STD 872-90-05
	Sheet No.:	05